

SafeLink SmartWatch



Safelink is redefining independence, offering the perfect balance of comfort, technology and peace of mind. powered by a comprehensive, intuitive platform, you can go to market quickly and maximize RMR.



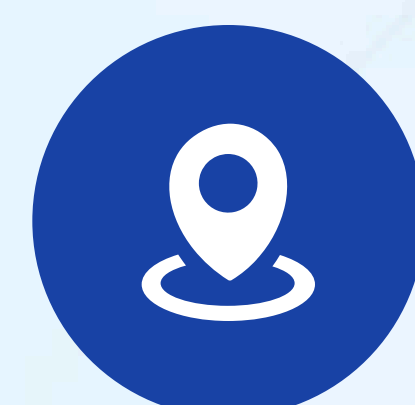
Reliable 4G LTE Network

Stay connected and protected throughout the US and Canada with AT&T'S 4G LTE network



All Day Battery Life

Provides all day coverage on a single charge



Best-in-Class Location Technology

Combined GPS and WIFI technology provides the fastest, most accurate location services available



Family Data Sharing

Easily share health records, appointment details, and updates with family members through the app



Automatic Fall Detection

Automatically detects a fall and instantly connects with our award-winning U.S.-based care specialists



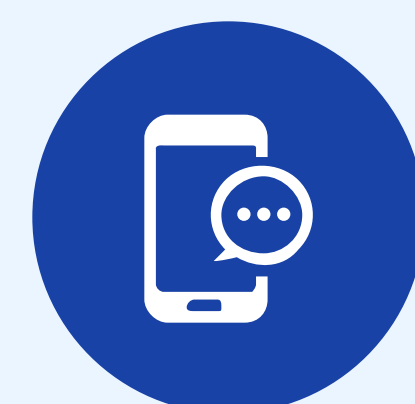
Text To Locate

Caregivers can quickly locate the device with a simple text message



Wellness Activity Sensors

Customers can monitor their heart rate and daily step count using our simple touch interface



Automated Voice Prompts

Receive essential notifications from the device, including emergency calls, low battery, charging status, and more



mySeniorCareHub
SAFETY | REASSURANCE | MONITORING

www.myseniorcarehub.com



SafeLink SmartWatch



Specifications

Cellular

Supported cellular bands: LTE B2/B4/B5/B12
Over The Air (OTA) Configuration Updates

Location Technology

GPS (GPS & INTERNATIONAL GNSS)
WiFi 802.11b/G/N
Network Based Location Backup

Physical & Environmental

Dimensions: 47.5 MM X 16.9 MM Weight: 65 grams
Screen: AMOLED True Color
Water Resistance: IP67
Operating Temperature: -20°C To +50°C

Electrical

5V DC 1A USB Charger
580mAh 3.7V Li-Po Battery

Usability & Accessibility

Haptic feedback with vibration motor
Full Sensor Suite: Heart Rate, Motion,
Vibration And Step Counting
User replaceable / customizable watchband
SOS Emergency Button



www.myseniorcarehub.com